

# MONTHLY MEMBERSHIP PROGRESS REPORT

District 14 D

Results as of: 4/30/2024

GMT:

LOCATION PENNSYLVANIA

GMT CA

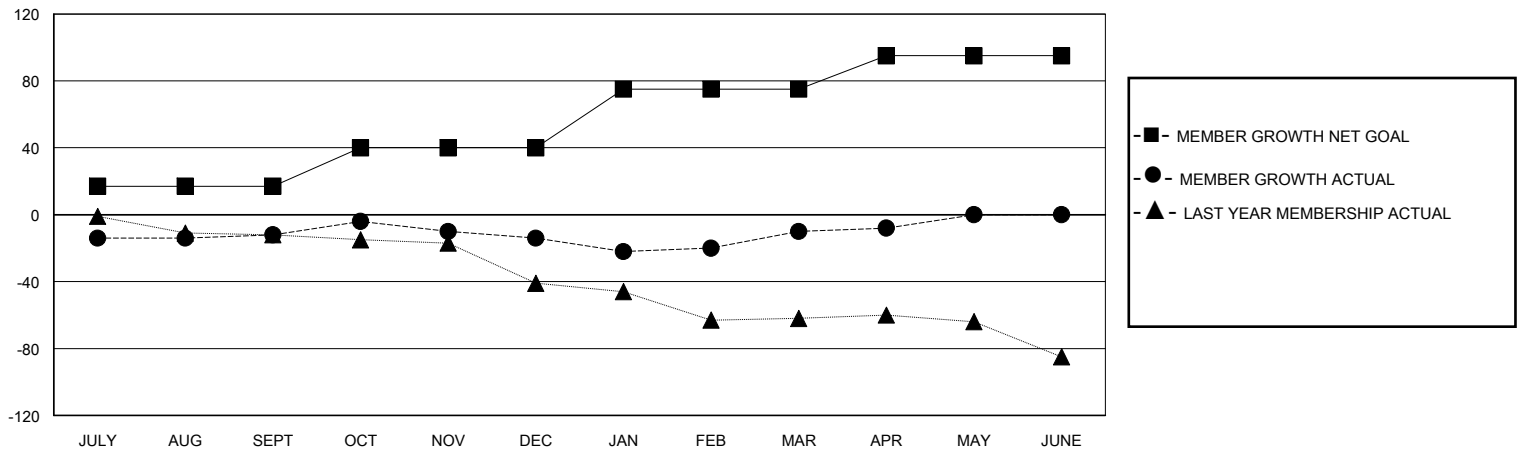
Clubs			
RESULTS FOR 2023-2024			
QUARTER	NEW CLUB GOAL	NEW CLUBS	DROPPED CLUBS
JULY/AUG/SEPT	0	0	0
OCT/NOV/DEC	1	0	0
JAN/FEB/MAR	0	0	0
APR/MAY/JUNE	0	0	0

Members			
RESULTS FOR 2023-2024			
QUARTER	MEMBER GROWTH NET GOAL	MEMBER GROWTH ACTUAL	DROPPED MEMBERS ACTUAL (including transfers)
JULY/AUG/SEPT	17	23	31
OCT/NOV/DEC	23	20	19
JAN/FEB/MAR	35	26	22
APR/MAY/JUNE	20	10	6

GOALS AND ACTUAL NEW CLUBS CUMULATIVE



GOALS AND ACTUAL MEMBERS CUMULATIVE



DROPPED CLUBS: 0	26 CLUBS OF 41 ADDED 1 OR MORE NEW MEMBERS	<b>GENDER DISTRIBUTION</b>
		MALE 902 (75.73%)
		FEMALE 289 (24.27%)
<b>DROPPED MEMBERS</b>	<a href="#">CLICK HERE FOR CUMULATIVE MEMBERSHIP DATA</a>	TOTAL FAMILY UNIT MEMBERS 217
DECEASED 20		FAMILY MEMBERS PAYING HALF DUES 112
CLUB CANCELLED 0		
OTHER 58		
<b>TOTAL 78</b>		